

LEARNING
FOR LIFE
at Morley



ACCESS TO
HIGHER EDUCATION

2012/2013

WELCOME TO MORLEY

Morley is an adult education college and has been running Access to HE courses for over 30 years. We have an excellent record in helping our students to achieve their ambitions. We offer a variety of Level 3 Access to HE Diplomas which enable students to progress to study for a degree. We also offer Level 2 Pre-Access courses leading to all our Diploma subjects.



Music

See pages
14–17 & 26



How to apply

- 1** Select a course
(see pages 06–27)
- 2** Check out the course costs
(see page 32)
- 3** Follow the application process
(see page 28)

Health

See pages
18–23 & 27



Humanities

See pages
06–13 & 25

Contents

02 Start Your Journey at Morley

Access to HE Diplomas

- 04 General Information
- 06 Humanities
- 08 Social Science
- 10 Social Work
- 12 Media Studies
- 14 Music
- 16 Music Technology
- 18 Health & Human Science
- 20 Midwifery
- 22 Nursing

Pre-Access Certificates

- 24 General Information
- 25 Pre-Access to Humanities, Social Science and Social Work
- 26 Pre-Access to Music and Music Technology
- 27 Pre-Access to Nursing, Midwifery and Health Science

How to Apply

- 28 The Application Process
- 29 Entry Routes and Requirements
- 30 Frequently Asked Questions
- 32 Course Costs

! Courses tailored to your interests

Students can select to study from a range of modules, and timetables may vary depending on individual interests.

Start Your Journey at Morley

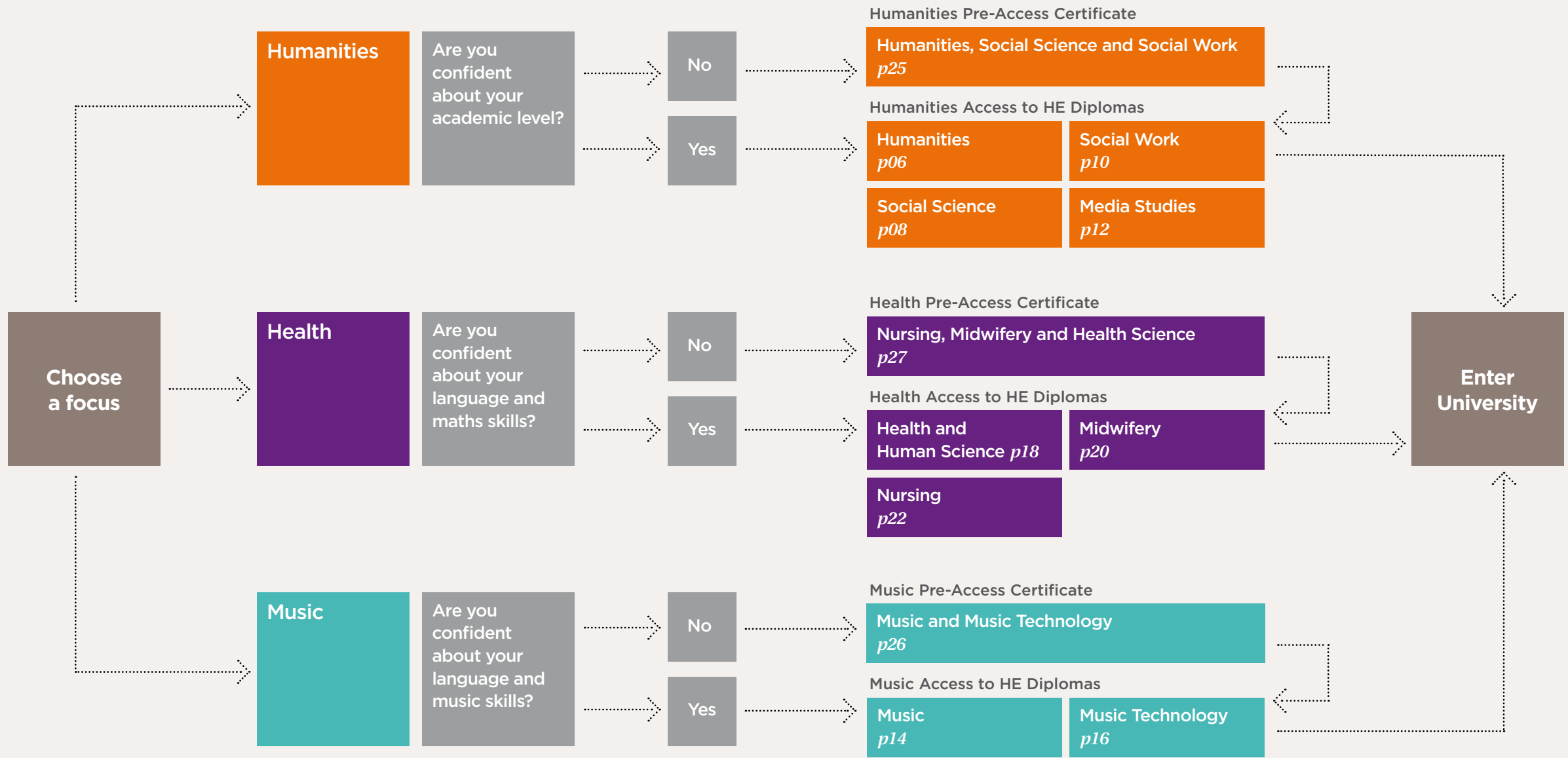
Any questions?

Phone us on
020 7450 1836/
020 7450 1861

Email us via
access@
morleycollege.ac.uk

WANT TO APPLY?
See pages 28-32
for details of the
application process,
entry requirements
and course costs.

OPEN DAY
Come along to one
of our open days –
visit morleycollege.ac.uk/access for
details.



Access to HE Diplomas



General Information

Access to HE Diplomas are awarded based on a system of credits, with students required to achieve a total of 60 credits (45 at Level 3 and 15 at Level 2 or 3) for the Diploma to be awarded.

Each Access to HE Diploma is composed of a number of modules, and each module is made up of several units. Students complete assignments as homework which are then marked by tutors and externally verified by staff from OCNLR. Each successfully completed assignment is usually worth three credits.

There are no final exams, although you may be given tests throughout the year by your tutors that will form part of the evidence for your personal portfolio. Additionally, the Level 3 credits will be graded (pass, merit, distinction) and it is likely that you will receive an offer of a university place conditional upon achieving certain grades, for example, at least 30 credits at merit grade.

Generic and Mandatory Modules

Although the exact number and combination of modules for each Access Diploma pathway is different, as a rough guide you can expect that you will need to gain credits in at least four modules.

Study Skills

The Study Skills module is mandatory for all Access pathways and is designed to help you to develop the kinds of academic skills that are required in order to go on to successful independent study at university. It will increase your abilities in the following areas:

- formulating and executing research strategies for assignments
- effective note-taking methods
- structuring and writing academic essays, including use of the Harvard System of Referencing
- correct use of language, grammar and punctuation
- exam performance and revision techniques
- presenting yourself in group work, discussion and when giving seminar papers
- the dynamics of group learning
- writing and analysing formal reports.

Support at hand

THE ACCESS TO HE DIPLOMA IS DEMANDING BOTH IN TIME AND EFFORT; BUT OUR FRIENDLY AND INCLUSIVE LEARNING ENVIRONMENT IS HERE TO SUPPORT, MOTIVATE AND GUIDE YOU THROUGH YOUR STUDIES. FIND OUT MORE ABOUT THE SUPPORT WE CAN OFFER ON PAGES 30-31.

Tutorials

The Tutorial module is mandatory for all Access pathways and is a weekly opportunity to reflect on your progress with your personal tutor. During these weekly sessions you are given support in completing personal statements and UCAS applications. In the second term you are helped to develop interview skills in preparation for university interviews and lastly advice is available regarding financial support whilst at university. We also provide a number of enrichment activities in partnership with London South Bank University as part of our progression agreement programme to help support you in securing a place at the university of your choice.

Maths

A number of the Access pathways have a mandatory Maths module, which has to be completed regardless of whether or not you already hold a Maths GCSE. If the diploma you are taking does not contain Maths and you do not have a GCSE grade C in this subject, you may be limited in your choice of degree or university. We can offer you the opportunity to take Maths in addition to those modules listed in your diploma.



Any questions?



Phone us on
020 7450 1836/
020 7450 1861



Email us via
access@
morleycollege.ac.uk



WANT TO APPLY?
See pages 28-32 for details of the application process, entry requirements and course costs.



OPEN DAY
Come along to one of our open days – visit morleycollege.ac.uk/access for details.

Humanities

Access to HE Diploma

This pathway will introduce you to new ways of thinking: you will develop your skills of analysis, reflection and debate as well as academic skills to prepare you for independent study at university. This pathway can lead to a career in teaching, the civil service, PR, marketing and the voluntary sector.

Timetable

Monday

Afternoon
Philosophy and Tutorial
Evening
Study Skills

Tuesday

Morning
History
Afternoon
Literature
Evening
Psychology



Modules

In addition to the Study Skills and Tutorial modules described on page 05, you will select three other modules from History, Literature, Philosophy or Psychology. These can be taken in any combination. However, if you are considering a social science degree and do not have a GCSE in Maths then you should take the Social Science pathway described on page 08.

History

Examine continuity and change, starting with a study of enlightenment, followed by the industrial revolution and the impact of migration within the British Empire. You will also explore the economic and social impact of the Atlantic slave trade. The module then moves on to feminist writing from the turn of the 18th and 19th centuries and concludes with the historical relationship between Britain and India.

Did you know?

Students who studied Humanities at Morley have gone on to study at Goldsmiths, Birkbeck, Leeds and SOAS.

Literature

The main focus of this module is modern and contemporary literature, including short fiction, poetry and plays. You will read literature from a variety of different cultures, and will consider how cultural and social backgrounds give rise to different types of poetry. You will have the opportunity to select a modern novel of your choice to study in depth, as well as a short novel.

Philosophy

Explore some of the questions that have puzzled and fascinated humans since the very beginning of history. The module begins with the Greek philosophers Plato and Aristotle, followed by an examination of the fundamental issues of morality and arguments concerning the correct basis for ethics and their application to current ethical problems. The module also covers the philosophy of religion, political philosophy, epistemology, the philosophy of science and the mind.

Psychology

Please see page 09 for information about this module.



David Kestler, 35, completed an Access to Humanities Diploma in 2011 and is now studying English Literature at Queen Mary University, London.

Q What were your reasons for studying an Access course at Morley?

A Prior to the course I was working for a mobility solutions organisation as an Account Manager. Having never formally finished education it was a necessity to obtain the required qualifications to move on to a degree course, and equally I simply wanted to reacquaint myself with academic modes of thinking, discussing and writing.

Q What aspects of the course did you particularly enjoy?

A I enjoyed all facets of the Humanities course. Philosophy introduced me to many forms of thought which I had never had exposure to. English Literature, besides being the subject I have gone on to study as an undergraduate, tackled a broad range of literary fields in an enjoyable, digestible and challenging way.

Q In what other ways did the course help prepare you for further study?

A The Study Skills module provided me with a variety of academic tools which I have already used in my first few weeks at university.

Q Would you recommend the Diploma to others?

A The Access Diploma is a great confidence booster if you're uncertain about heading on to a degree as it provides you with the fundamental tools you'll require. The teaching staff are very experienced and utilise a wide variety of teaching methods suitable for adult learners. I would definitely recommend the course to anyone looking to move on to higher education. I truly enjoyed my time at Morley!

Any questions?



Phone
Ibtihal Makmahi,
Course Leader on
020 7450 1825



Email
Ibtihal Makmahi via
ibtihal.makmahi@
morleycollege.ac.uk



WANT TO APPLY?
See pages 28–32
for details of the
application process,
entry requirements
and course costs.



OPEN DAY
Come along to one
of our open days —
visit [morleycollege.
ac.uk/access](http://morleycollege.ac.uk/access) for
details.

Social Science

Access to HE Diploma

This pathway is for those who are interested in understanding more about the culture, institutions, ideas and behaviour of the society they live in. It will develop your skills in analysing and presenting factual information, examining and debating ideas, and equip you with a range of skills that will be invaluable in your university studies and career.

Timetable

Monday

Morning
Tutorial
Afternoon
Sociology
Evening
Social Policy*

Tuesday

Evening
Psychology*

Wednesday

Morning
Maths
Afternoon
Psychology*

Thursday

Morning
Social Policy*
Afternoon
Study Skills

* you will select one Psychology class and one Social Policy class

A social science qualification may lead to a wide range of professions, including law, criminology, the civil service and teaching, as well as for many positions in charities and local organisations.



Modules

In addition to the Study Skills, Tutorial and Maths modules described on page 05, you will take modules in Sociology, Psychology and Social Policy.

Sociology

Explore some thought-provoking ideas that will challenge everyday assumptions about what is 'normal', 'real' and 'rational', and examine the workings of current British society in some depth. As well as dealing with detailed, factual examples and debating the different theoretical perspectives that have been developed in sociology, this module will enhance your critical thinking skills and help develop your ability to conduct social science research projects on your own.

Social Policy

Please see page 10 for information about this module.

Did you know?

Students who studied Social Science at Morley have gone on to degrees in Sociology, Anthropology, Criminology and Psychology.

Psychology

A general introduction to the sciences of the mind, providing a grounding in a variety of theories in the nature of human psychology, as well as a number of the different research methods used within the subject. Following a general introduction, you will study a series of specific branches of psychology, such as abnormal psychology, personality theory, clinical psychology, developmental psychology, cognitive psychology and social psychology.

You will investigate the different perspectives on the nature, causes and treatment of mental illnesses and disorders; debate whether psychology is best approached in terms of people's behaviour or their emotions; look at the process of child development and consider the role of the brain in our mental lives.

The module will also enable you to critically examine the conclusions to be drawn from reports and data of various kinds and to look at the issues that arise when attempting to design and carry out experiments to further our knowledge of ourselves.



Keith Marais, 37, undertook the Access to Social Sciences Diploma in 2009/10. He is currently studying Psychology at Birkbeck, University of London.

Q What were you doing before you came to Morley?

A Before enrolling on the Access programme I was working in interactive television, but wanted a career change. I wasn't completely sure of the direction I wanted to take at university – psychology and sociology appealed to me, as did counselling. The Social Science Access Diploma was ideal as it allowed me the time to focus on making the right decision.

Q How did you find the course?

A I enjoyed the variety of subjects covered on the Access Diploma. Sociology enabled me to develop my critical thinking, while the Psychology module was great preparation for my current studies at Birkbeck, as it meant I had a year to familiarise myself with the themes and debates beforehand and felt much more confident in my first few weeks at university as a result.

Q What are your plans for the future?

A I now hope to continue my studies to become a clinical psychologist.

Q Would you recommend the Access to HE Diploma?

A I'd definitely recommend the Access course to others – the atmosphere was great, the staff were friendly and supportive, and the study skills support was really helpful.

Any questions?



Phone
Ibtihal Makmahi,
Course Leader on
020 7450 1825



Email
Ibtihal Makmahi via
ibtihal.makmahi@
morleycollege.ac.uk



WANT TO APPLY?
See pages 28–32
for details of the
application process,
entry requirements
and course costs.



OPEN DAY
Come along to one
of our open days –
visit morleycollege.ac.uk/access for
details.

Social Work

Access to HE Diploma

This pathway is for those who wish to progress on to a career in the public sector, particularly in social work and the caring professions. In addition to the successful completion of the Diploma, universities will expect you to have undertaken professional and/or voluntary work experience in an area relevant to social work,

and will require a CRB check. We recommend that you organise some voluntary or paid work as soon as possible to gain experience.

Timetable

Monday

Evening
Social Policy*

Tuesday

Evening
Psychology*

Wednesday

Morning
Psychology*
Afternoon
Maths

Thursday

Morning
Social Policy*
Afternoon
Social Work

Friday

Morning
Tutorial
Afternoon
Study Skills

* you will select one Psychology class and one Social Policy class



Modules

You must undertake all the modules for this pathway to successfully complete your diploma. This includes the Study Skills, Maths and Tutorial modules as described on page 05.

Social Policy

An introduction to social policy and the welfare state, its origins and development, including landmark post-war legislation, and an examination of current government legislation.

Ideological debates around the nature and causes of poverty will be studied, as well as housing policy, NHS provision and education. The distinctive characteristics of New Labour social policy will also be investigated.

Psychology

Please see page 09 for information about this module.

Did you know?

Students who studied Social Work at Morley have gone on to study at London Metropolitan University, LSBU, Greenwich and UEL.



Rosel Cumberbatch, 42, completed an Access to Social Work Diploma in 2011 and is currently studying for a BA in Social Work at Goldsmiths University.

Social Work: Theory & Practice

Cover the essential skills and knowledge that you will need in order to progress on to an undergraduate degree in social work. The module begins by examining the changing nature and role of the social worker and will provide you with an opportunity to analyse the kinds of skills and qualities that are involved in working in this sector.

You will also study how to put the core principles and policies of social work into practice and become familiar with the key pieces of legislation that cover the various social work specialisms.

Q What were you doing before you came to Morley?

A Before starting the course I was working as a social work assistant for the London Borough of Lewisham.

Q Why did you decide to take the Access course?

A I did not have a maths qualification and I knew it would be difficult for me to access a BA in Social Work without one. As I had left full time education many years ago, I felt that the Access Diploma would give me the opportunity to get back into education and get me to a level where I could apply for a degree course.

Q How did you find returning to education?

A I loved the mixture of students and felt comfortable studying amongst adult learners. The many fears I had about being a mature student faded once I joined Morley, and it was enlightening to see many older learners. It made me realise that education is for everyone, regardless of age, disability or race.

Q What did you think of the course itself?

A Some of the subjects challenged me, but in a positive way, and I found the approachability of my tutorial tutor and course leader really useful.

Q What difference has the Diploma made to you?

A Not only did the Diploma give me the requirements I needed in terms of Maths, but it gave me the ability to study again and to get my head back into that mode. I would recommend the Access course at Morley to others – it gave me both a sense of purpose and the hope that I can enter the profession I am very passionate about.

Any questions?



Phone
Ibtihal Makmahi,
Course Leader on
020 7450 1825



Email
Ibtihal Makmahi via
ibtihal.makmahi@
morleycollege.ac.uk



WANT TO APPLY?
See pages 28–32 for details of the application process, entry requirements and course costs.



OPEN DAY
Come along to one of our open days – visit morleycollege.ac.uk/access for details.

Media Studies

Access to HE Diploma

This pathway is for those who wish to progress on to a career in television, journalism, video, film, public relations or advertising. It may also appeal to students seeking a managerial or administrative position requiring creativity and imagination. You will gain a variety of practical media skills and the academic grounding required to succeed in university education.

Timetable

Tuesday

Evening
Practical Journalism

Wednesday

Afternoon
Tutorial & Study Skills

Thursday

Morning
Understanding Modern Media

Afternoon
Media Production & Practice



Modules

You must undertake all three modules listed for this pathway plus the Study Skills and Tutorial modules described on page 05.

Practical Journalism

Explore the essential skills required by journalists working in print.

There is an emphasis on good spelling, grammar, layout and structure, providing you with valuable practical skills for both higher education and your future career.

Class work is guided to help you improve your writing technique, master the art of editing and develop interviewing skills. You will study the newspaper and magazine sectors, exploring content and style.

Did you know?

Students who studied Media Studies at Morley have gone on to study at Goldsmiths, Brunel and Westminster.

Media: Production & Practice

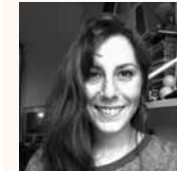
A wide-ranging and hands-on introduction to media practice, structured around a programme of six core units which include video production; radio & sound production; research & scriptwriting; photography and digital media.

Alongside practical production projects, you will be introduced to contextual study including media practices, the development of the media, and also the analysis of media forms.

Understanding Modern Media

A thorough grounding in central aspects of media theory, introducing you to the key issues and debates of this industry.

Areas of study include the language of media; media forms and genres; media institutions and debates surrounding the effects of media content; the history of broadcasting; the press; cinema and film studies; audiences and issues of control and representation in the media; media, society and culture; new media & technology.



Marine Guichard, 25, completed an Access to Media Studies Diploma in 2011, and is currently studying Media and Communications at Goldsmiths College, University of London.

Q What were you doing before you came to Morley?

A After passing my Baccalaureat in France, I moved to London and worked as an au pair for nine months before moving from job to job and trying to settle down. I tried getting back into education and signed up to a couple of courses, but dropped out of both. I was left feeling a bit depressed about academia as a whole.

there to give us guidance if needed. It was hard work at times, and I was also working 40 hours a week on top of my studies, but if I can do it and achieve such good grades, then anyone can.

Q How has the Diploma helped prepare you for higher education?

A The fact that it was theoretical and practical really prepared me for further study. I'm currently doing a BA in Media and Communications at Goldsmiths which is supposed to be one of the best universities for my chosen field, and have also just found out that I have been awarded a bursary of £1000.

Q What made you decide to take the Access course at Morley?

A A couple of years later I enrolled on a short course in journalism taught by Mike at another college. I found that I was quite good at writing and decided to move on to the Access course in Media at Morley. I passed the course with a mix of merits and distinctions as well as a student of the year award.

Q In what other ways has the Diploma been of benefit to you?

A I had somehow lost my confidence before the start of the course, but my time at Morley really helped me to regain it.

Q How did you find the course?

A Both my tutors were extremely kind, helpful and passionate. The course itself is broad and gives an extensive overview of the subject. The tutors encouraged us to think for ourselves but were always

Any questions?



Phone
Mike Harris,
Course Leader on
020 7450 1922



Email
Mike Harris via
mike.harris@
morleycollege.ac.uk



WANT TO APPLY?
See pages 28–32 for details of the application process, entry requirements and course costs.



OPEN DAY
Come along to one of our open days – visit morleycollege.ac.uk/access for details.

Pre-Access Certificates



OUR PRE-ACCESS PATHWAYS ARE FULL LEVEL 2 COURSES, EQUIVALENT TO 5 GCSE A-C GRADES. THEY TAKE PLACE OVER 30 WEEKS AND ARE FOR THOSE WHO ARE NOT READY TO BEGIN THE ACCESS TO HE DIPLOMA. THEIR PURPOSE IS TO HELP YOU DEVELOP THE SKILLS NEEDED TO PROGRESS TO THE LEVEL 3 DIPLOMA PROGRAMME. SUCCESSFUL COMPLETION OF THE PRE-ACCESS CERTIFICATE REQUIRES THAT YOU ACHIEVE A MINIMUM OF 24 CREDITS.

Generic and Mandatory Modules

There are up to three mandatory generic modules which Pre-Access students study: Study Skills, Maths and Information Technology.

Study Skills

This module consists of one or two Study Skills sessions per week and is fundamental to developing English and writing skills that will be needed in order to progress on to the Access to HE Diploma. You will develop speaking and listening skills, reading strategies, improve your grammar, spelling and punctuation and learn to use writing for meaning. During these sessions you will have a regular opportunity to reflect on your progress with your personal tutor and discuss any specific problems or learning support.

Maths

This module will develop your confidence in maths skills and consists of Level 1 units in basic calculations, percentages, fractions, decimals and data handling.

Information Technology

This module takes place in terms 1 and 2 and will increase your confidence with using IT, including word processing skills and using the internet for research and academic purposes.

Humanities, Social Science and Social Work

Pre-Access Certificate

This is a full Level 2 course, equivalent to 5 GCSEs at grades A-C, and can also serve as a qualification in its own right.

Timetable

Monday

Morning
IT

Tuesday

Morning
Social Science
Afternoon
Study Skills

Wednesday

Morning
Study Skills
Afternoon
Maths



Modules

In addition to the mandatory Study Skills, Maths and Information Technology modules described on page 24 you will study a module in Social Science.

Social Science

Explore the key characteristics of the British system of government and society and wider aspects of culture and religion and diversity in society. You will also examine aspects of business practice and organisation, and the challenges of the workplace environment.

Any questions?



Phone
Ibtihal Makmahi,
Course Leader on
020 7450 1825



Email
Ibtihal Makmahi via
ibtihal.makmahi@morleycollege.ac.uk



WANT TO APPLY?
See pages 28-32 for details of the application process, entry requirements and course costs.



OPEN DAY
Come along to one of our open days – visit morleycollege.ac.uk/access for details.

The Application Process

START

1

COMPLETE AN APPLICATION FORM

Contact Andy Dummett, Departmental Administrator on **020 7450 1836** for an application form and complete and submit the form as directed. You can also download an application form from our website. This will be assessed by one of the course leaders who will decide whether to invite you to the next stage of the process.

2

DO A SKILLS TEST AND INTERVIEW

Attend dates given for English and maths screening and interview. For music courses there will also be an audition and/or a music skills test.

3

APPROVED!

If your application is successful you will receive a written offer and an invite to an Induction Day for your pathway. If your application is unsuccessful we may refer you to our Skills for Life team for advice and guidance on English and maths courses.

4

COMPLETE ENROLMENT

Confirm your place by completing the College enrolment form, including payment of fees. See page 32 for details. Your place on the course is not guaranteed until you have completed this stage.

5

ATTEND INDUCTION

You will be required to attend an induction day before the course starts. At this stage you will receive your timetable.

WELCOME TO MORLEY

Entry Routes and Requirements

Choosing Your Entry Route

Depending on your level of English and maths, you will either need one or two years to complete an Access to HE Diploma. The options are as follows:

Level 3 Access Pathways

This is a one-year programme in which you take all the required modules for your chosen pathway. You must also take core skills to develop your academic communication and study skills.

Level 2 Pre-Access Pathways

This is for you if you are not yet ready to study at Level 3 and require more intensive work over a year to develop your academic study skills before progressing on to an Access to HE Diploma.

Entry Requirements

You must be aged 19 or over to apply for any of the Access or Pre-Access pathways. You do not need any qualifications, but you do need to demonstrate the ability to study and achieve beyond GCSE/Level 2. For the Pre-Access to Music and Access to Music/Music Technology courses further information on entry criteria is given under each course.

If you are invited to the screening test, you will take tests for English and maths as well as a written assessment before interview. This will help you and the College to determine whether you are ready to take on the challenges of an Access to HE Diploma or if another course would be more suitable. The decision to offer you a place will be taken by the interviewer who will take account of your performance in the English and maths screening tests, the written test and your responses at interview.

The minimum levels potential learners are expected to demonstrate are:

	English	Maths
Access	Working at Level 2	Working towards Level 2
Pre-Access	Working at Level 1	Working at Entry Level 3

If you are applying for a Pre-Access or Access Music course you will also be required to attend an audition and/or music tests.

Frequently Asked Questions

What will I study?

This depends upon your interests and current level of skills. After your assessment and interview we will help you find the most suitable entry route and programme. All Access pathways have a number of mandatory modules, and some offer optional modules so that you can find the right combination of subjects to meet university entrance requirements and follow your own interests.

Does my Access Diploma have to be in the same subject area as the one I study at university?

Some, but not all, university courses require you to have studied a similar subject or may have other specific requirements. Your Course Leader will be able to advise you on this at interview as will your chosen university.

How do I achieve an Access to HE Diploma?

Successful completion of the Access Diploma requires that you achieve a minimum of 60 credits (see page 04 for further details). Each Access pathway has additional criteria that specify combinations of mandatory and optional units which must be achieved for successful completion. Details of these will be explained at your interview.

How will I be assessed?

Assessment takes place continually. You will be set assignments for which credits will be awarded. These may include written or oral tasks, performances or tests. At the end of the academic year these assessments are externally moderated by the Open College Network London Region (OCNLR).

What is OCNLR?

The Open College Network London Region (OCNLR) is the examination body which accredits our Access Diplomas. Their accreditation means that the Access Diploma is a nationally recognised qualification and that you will receive a certificate recording your achievements on the course. You must register with OCNLR to undertake an Access Diploma at Morley.

What can I progress on to?

Universities recognise the Access to HE Diploma as an equivalent qualification to A-level or vocational qualifications, enabling you to apply for a course at university where this is a minimum requirement.

What support will I have?

You will receive detailed advice on your university application from a personal tutor who will offer support and guidance throughout the year. The Access Course Leaders are available at set times during the week to help with your problems and concerns. Additional support is available for those with disabilities and learning difficulties (see below).

Are there facilities to support people with young children?

Depending on your financial status, you may be able to seek support for childcare related costs through our Hardship Fund. Such support is limited so it is important to apply as early as possible. For further details contact Pearl Flanders on 020 7450 1855.

Are the courses accessible to people with disabilities and learning difficulties?

Morley aims to support all students in their studies. We encourage you to disclose disabilities and learning difficulties on the enrolment form and to contact us as soon as you arrive so that we can discuss your needs with you. We may be able to provide one-to-one specialist support for dyslexia, short-term counselling or in-class adjustments for learners with disabilities. For further information please contact Sally Townsend or Carole Powell on 020 7450 1835 or at learningsupport@morleycollege.ac.uk

When should I apply?

Applications can be made at any time from January 2012. It is advisable to apply early, particularly for those courses in the health section. Please note that the academic year starts in early September 2012.

I left school years ago; will I be able to cope with an Access Diploma?

Our Access to HE students are of a wide age range. Many people are nervous when they start an Access to HE Diploma, particularly if they haven't been in a classroom for some time. Tutors are aware of this and take it into account in their teaching. Though you can expect the programme to be challenging, the whole purpose of an Access to HE Diploma is to help you to be successful.

What are the entry requirements?

You do not need any formal qualifications but you will be required to take an initial test of reading and writing and, for some courses, a maths test. See page 29 for details. Our music courses have additional entry criteria and you may be required to attend an audition and/or music tests. See individual pathway pages for more information.

A genuine commitment to higher education and an interest in the subject is essential. For Nursing & Midwifery pathways, clinical experience is desirable. For Social Work pathways experience in the field is an advantage, but not essential.

What if I'm an overseas applicant?

We are unable to help learners based overseas to get a visa to study in the UK. If you are already based in the UK on a visa that is not dependant on you being a student you can apply for our courses. If you have been living in the EU for less than three years it is likely that we will class you as an Overseas Learner which means your fees will be higher than those for home learners. Please contact us for further advice as each case is different.

Overseas applicants for the Nursing and Midwifery pathways may not be guaranteed a place at university even if they successfully complete an Access to HE Diploma. This is because you will only be entitled to a government grant or NHS bursary to fund your university studies if you satisfy one of the following conditions:

- You have been resident in the UK throughout the three years preceding the first day of the academic year of the university course, other than for the purpose of receiving full time education
- You have settled status in the UK within the meaning of the Immigration Act 1971 on the first day of the first academic year of the course
- You have been granted refugee status or exceptional leave to remain in the UK
- You are a citizen of the European Union who has been resident in the UK for three years.

For further information contact the admissions department at your university of choice; NHS Careers at www.nhscareers.nhs.uk; or the UK Border Agency on 0870 606 7766 or www.ukba.homeoffice.gov.uk

For the Access to Music Technology Course, do I need any software of my own?

Home access to sequencing software is desired but not required.

For the Access and Pre-Access to Music courses, will there be any performance opportunities?

Yes, there will be at least two opportunities during the year.

Is there guaranteed progression from Pre-Access courses to Access courses?

No, you will still have to apply and may be interviewed (and auditioned for Music Access). We will take into account your attendance, punctuality and work submission all of which will provide you with a good foundation of skills and a better chance of being offered a place on an Access course.

Will I be able to visit the College before I apply?

We will be holding a number of open days in 2012. Further information will be available shortly – please check www.morleycollege.ac.uk/access for details.

Course Costs

Concessions

You will be eligible for full tuition fee remission if the Access to HE Diploma will be your first full Level 3 qualification and you are under the age of 25 on 1 September 2012.

Learners in receipt of means-tested benefits who are unemployed may be eligible for full tuition fee remission. You may be asked to pay £100 for registration with OCNLR. You will need to bring formal evidence of your eligibility for this concession at the time of enrolment.

Financial Support

Students who are on benefits or low income are entitled to apply for financial assistance with fees, registration charges and child care. Students are advised to make their applications for support as early as possible. For further information and an application form, please contact Student Services on 020 7450 1855. If you do not qualify for financial assistance and are paying the full course fee, it will be possible to arrange to pay this fee in instalments.

Non-EU students are charged at twice the published full course fee and cannot claim concessions. This is because we do not receive public funding for non-EU students.



Questions about the course costs?

Phone us on **020 7450 1889**

Important

The course fee information in this guide is correct at the date of publication in December 2011. However, due to possible changes in Government funding these fees may be subject to change at any time up to the point of enrolment. We will seek to inform students of any changes to fees at the enrolment stage.

ACCESS PROGRAMME

£1,580

Pre-Access PROGRAMME

£1,400

Term Dates 2012/13

All Access programmes start in the first week of the academic year and run for 34 weeks. All Pre-Access programmes start in the first week of the academic year and run for 30 weeks.

Autumn 2012

10 September – 15 December
(Half term: 29 October – 2 November)

Spring 2013

7 January – 23 March
(Half term: 18 – 22 February)

Summer 2013

8 April – 29 June
(Half term: 27 – 31 May)

Contact Details

For advice and information about a specific pathway please contact the relevant Course Leader as provided on the pathway pages.

For general enquiries and to apply, please contact Andy Dummett on 020 7450 1836 or Simon Davis on 020 7450 1861. Alternatively, you can email access@morleycollege.ac.uk.

Morley Online

Find out more about Morley at:
www.morleycollege.ac.uk
www.facebook.com/morleywaterloo
Twitter: @morleycollege



Morley College Access
to HE Guide 2012/13
Designed by Hudson Fuggle
Printed by Belmont Press
Printed on Cyclus Offset



Made from 100%
recycled paper

Disclaimer

The information contained in this course guide was correct at the date of publication in December 2011. The College will seek to inform students at enrolment of any substantial changes of information.

The College is unable to accept liability if it should prove necessary to cancel any proposed programme of study prior to its scheduled start. In the event of such a cancellation, the College will take reasonable steps to transfer students affected by the programme to a similar or related programme of study, if that is possible, or offer a full refund of fees.

The College complies with all enactments concerning discrimination on grounds of race, sex or disability, and this course guide should be read as subject to the Interpretation Act 1978, s.6.

Morley College Limited is a company limited by guarantee registered in England No. 2829836.

Registered Charity No. 1023523

Registered Office 61 Westminster Bridge Road SE1 7HT

How to find us

By Bus

The following bus routes pass close to the College.

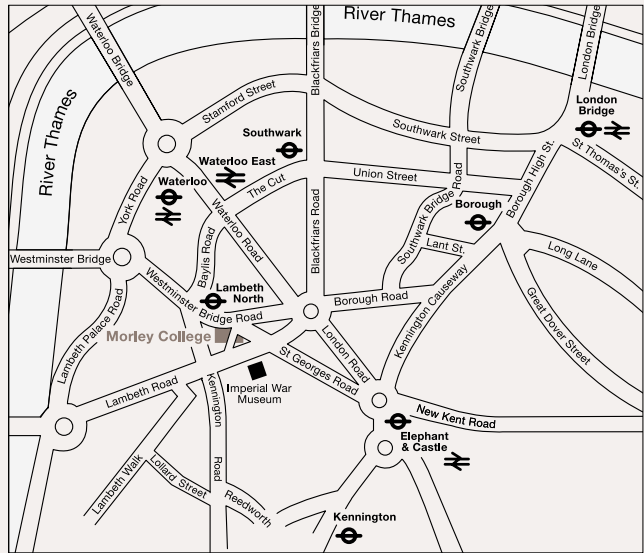
1	3	C10	12
45	53	63	68
159	168	171	172
176	188	344	360
453			

By Tube

100 metres from Lambeth North tube station and approximately 10 minutes' walk from either Waterloo or Elephant & Castle tube stations.

By Rail

Approximately 10 minutes' walk from Waterloo International, Waterloo Main Line, Waterloo East and Elephant & Castle railway stations.



■ Morley College Main Site

Morley College
61 Westminster Bridge Road
London SE1 7HT
Student Line 020 7450 1889
Fax 020 7928 4074
Web www.morleycollege.ac.uk
Email enquiries@morleycollege.ac.uk